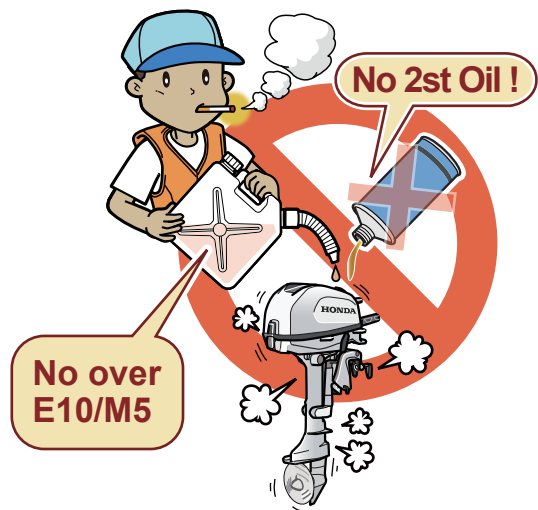


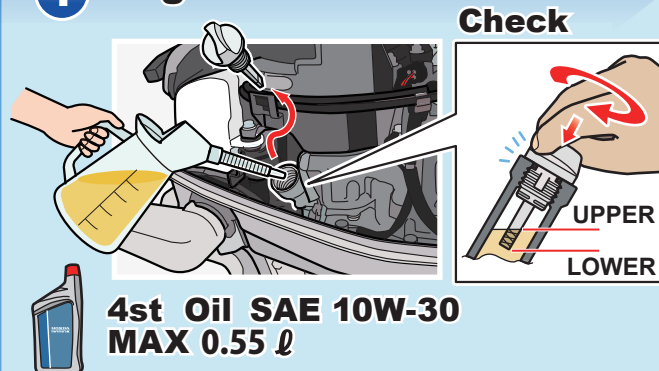


* Read and understand the Owner's Manual before operating the Outboard motor.

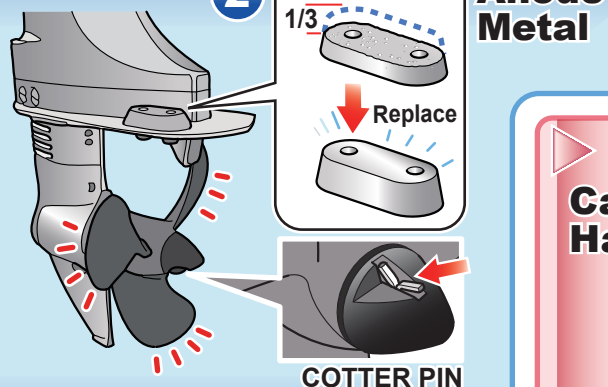


► Pre Operation Check

1 Engine Oil



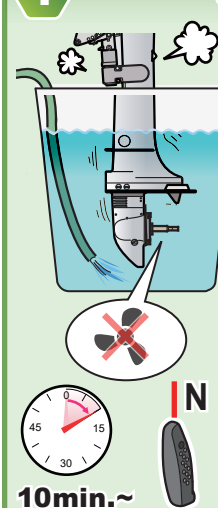
2



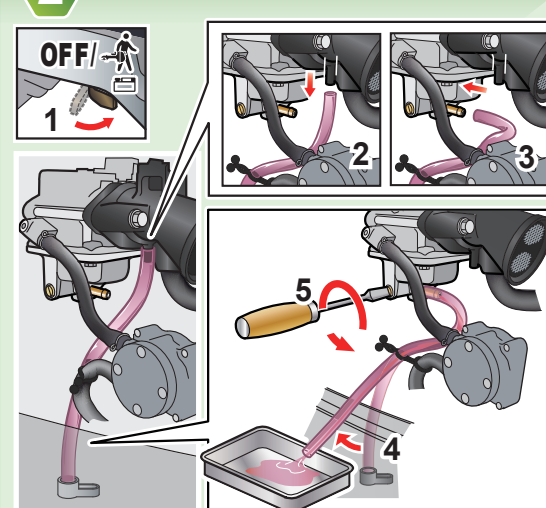
3 Propeller & Cotter Pin

► After Use

1 Flushing



2 Drain Fuel: Carburetor



! Safety Precaution

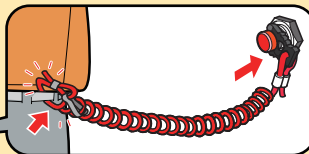
Wear Life jacket !



Confirmation of left and right.



Emergency Stop Switch Lanyard.



Weather forecast is confirmed.

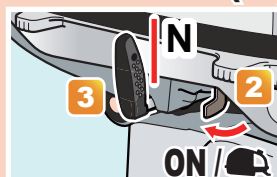


► How to start

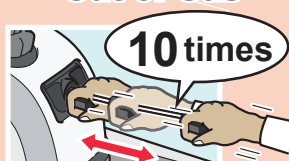
1 Vent Knob OPEN



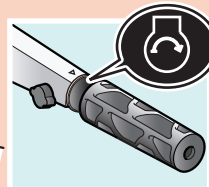
2 Fuel Valve Lever ON / 3 Shift Lever (N)



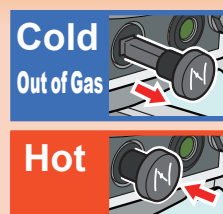
4 (Priming) First time Out of Gas



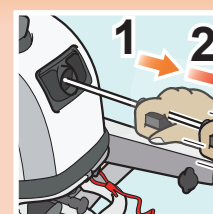
5 Throttle START



6 Choke ON/OFF



7 Start

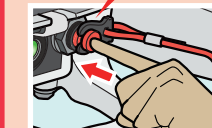


8 Oil Pressure Indicator Light



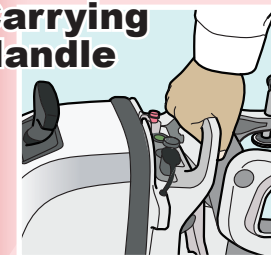
STOP

5-3-PUSH-2-1

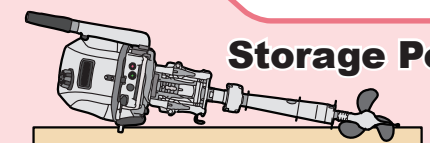


► Transporting

Carrying Handle



Storage Position



INCORRECT





Maintenance Schedule

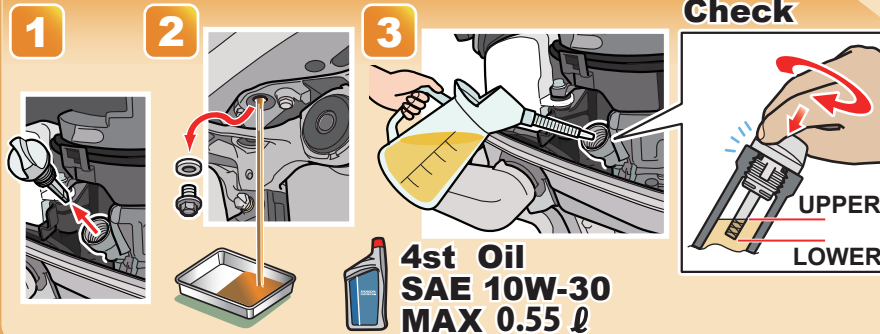
: Check
 : Change
 : Clean
 : Check-adjust

Regular Service Period	Before each use	First month or 20 Hours	Every 6 months or 100 Hours	Every year or 200 Hours
Engine oil				
Gear case oil				
Starter rope				
Spark plug				
Propeller and Cotterpin				
Emergency stop switch				
Anode				
Grease				
Fuel filter				
Fuel line				
Fuel line	Every 2 years Replace if necessary			
Valve clearance				
Idle speed 1550				
Carburetor linkage				
Fuel tank				
Tank filter				
Breather tube				
Thermostat				
Water pump				
Bolts and nuts				

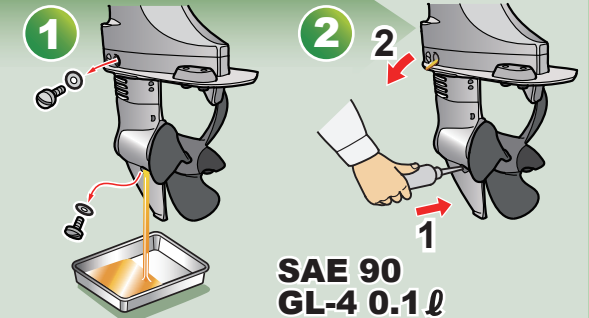
Take the outboard motor to a Honda servicing dealer.

* Read and understand the Owner's Manual before operating the Outboard motor.

Engine Oil

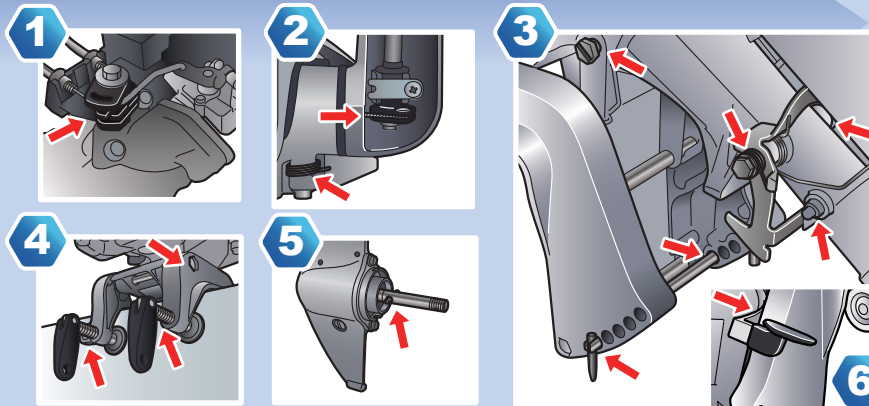


Gear Oil

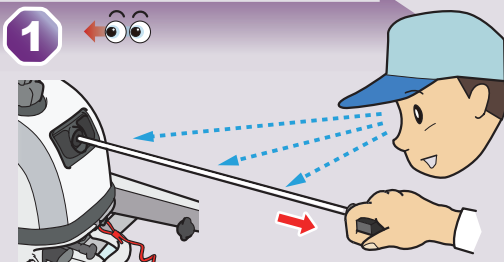


Grease

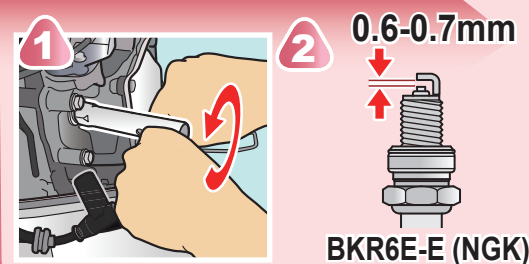
Water resistant urea based grease.



Starter Rope



Spark Plug



Fuel Filter

